



ARE YOU READY FOR AN APPRENTICESHIP?

2020/21



WHAT IS AN APPRENTICESHIP?

An Apprenticeship is a way for you to earn while you learn, through gaining valuable work experience and a recognised qualification upon completion within the industry you wish to work.

IS AN APPRENTICESHIP RIGHT FOR YOU?

If you are about to leave school or college and would like to get hands-on work experience but still want to get a qualification, or if you are already working and would like to upskill to progress your career, an Apprenticeship could be for you.



WHY CHOOSE PETERBOROUGH COLLEGE?

Every year the Apprenticeship Academy and local employers train over **1000 Apprentices** in their chosen profession. Our dedicated Apprenticeship Academy team are on hand to support you throughout your Apprenticeship journey to ensure you get the most out of your experience. Our industry professionals can also advise you on career pathways after your Apprenticeship has finished.



WHY CHOOSE AN APPRENTICESHIP?

1. AN APPRENTICESHIP IS A REAL JOB OFFERING REAL CAREER OPPORTUNITIES
.....
2. GAIN INDUSTRY SKILLS, KNOWLEDGE AND BEHAVIOURS EMPLOYERS REALLY WANT!
.....
3. MEET NEW PEOPLE AND DEVELOP LASTING FRIENDSHIPS
.....
4. BECOME CAREER MINDED
.....
5. AIM HIGHER WITH LEVEL 4, 5, 6 & 7 APPRENTICESHIPS
.....
6. REAL LIFE EXPERIENCE AND CHALLENGES
.....
7. INCREASE YOUR EARNING POTENTIAL
.....
8. NO DEBT - ACHIEVE THE QUALIFICATION YOU WANT WITHOUT THE DEBT OF TRADITIONAL EDUCATION ROUTES

APPLY NOW



www.peterborough.ac.uk/apprenticeships

CASE STUDIES

Rudi Alves

Level 2 Motor Vehicle (Light) Apprenticeship NCK Autos Ltd

When I left school I had planned on going to university to study Psychology but decided I would explore a career within the motor industry first. After finding a part-time job in a local garage, I was offered an Apprenticeship. Before this I hadn't really thought about an Apprenticeship being an option for me as I thought I would be going to university to study something completely different. Being on an Apprenticeship rather than full-time college has been really positive for me as it has given me skills that I need to work in the industry rather than just theory in a classroom.



Carly Mason

Brickwork Apprenticeship

When I left school I was interested in an Apprenticeship in brickwork and was over the moon when I secured my place on the programme. I have been made so welcome by the other apprentices, my employer and the college team. If you're a girl thinking of going into the construction industry, do not be put off! There are so many opportunities and if it's your passion or you find yourself to have a certain skill, pursue it! It's the best thing I ever did and the Apprenticeship has set me up to have a fantastic future!

FAQs

Who can apply for an Apprenticeship?

Anyone living in England, over 16 and not in full-time education can apply. There is no upper age limit for Apprenticeships.

How many hours will I work each week?

Minimum hours a week is 30 including 20% off-the-job training.

How much will I earn?

Minimum salary for an Apprentice is £4.15 per hour for under 19 year olds or over 19s in their first year of their Apprenticeship, although some employers may pay more.

Are there any additional costs?

Apprentices may need to purchase a uniform and/or equipment depending on the employer. You will also need to take into account costs for travel, lunch etc.

If I have any additional learning needs, will there be support available?

Yes, we are committed to supporting all our Apprentices throughout the process. Please contact the Apprenticeship Academy to find out more about what support is available.

What are the entry requirements?

Entry requirements vary depending on the Apprenticeship you are applying for and Employers will have their own entry requirements. Generally for Level 2 courses you may need up to five GCSEs at grade 3 (D) - including English and Maths. Please see individual course information for further details.

What if I don't meet the entry requirements

Talk to us in the Apprenticeship Academy and we will be able to offer guidance of the options available to you including Traineeships or Supported Internships.



APPLY NOW



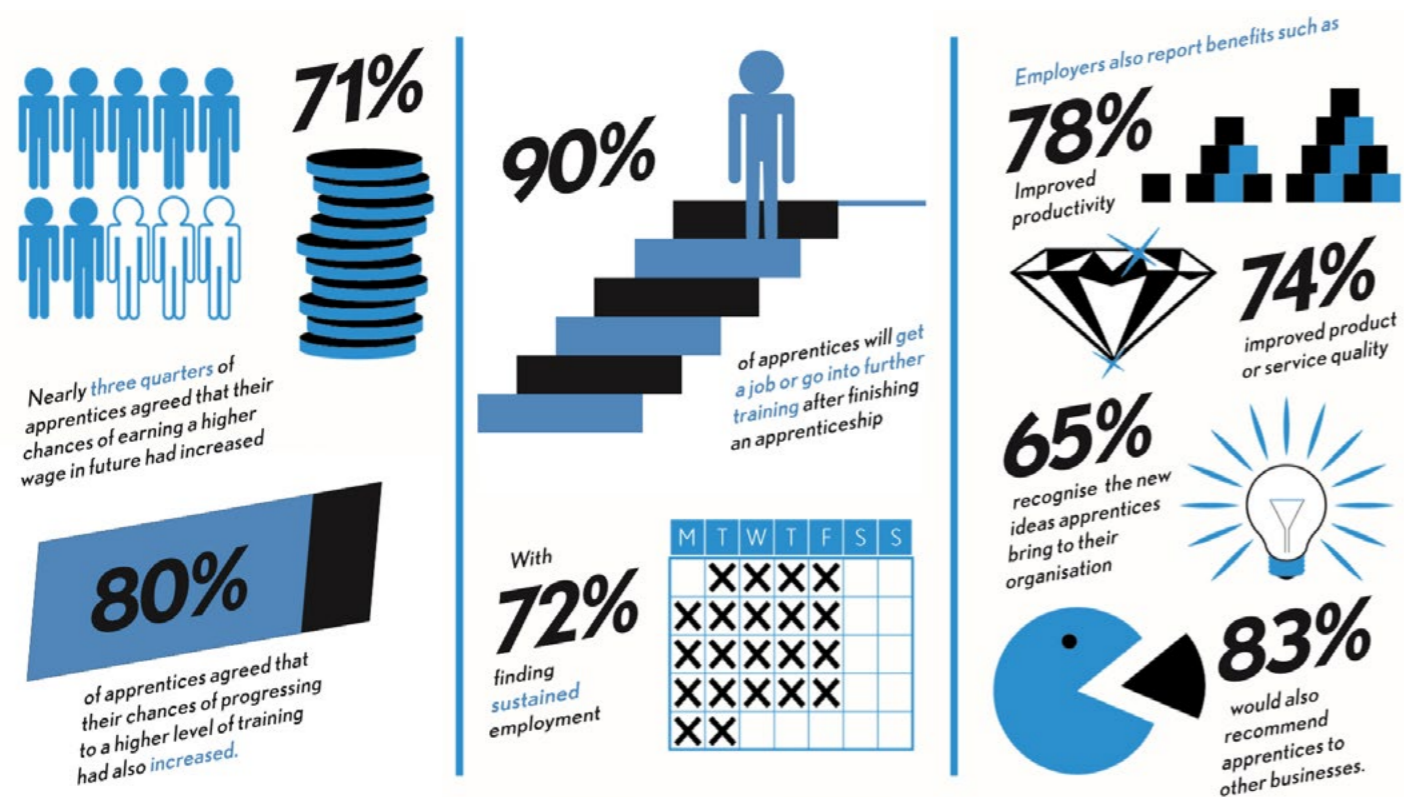
www.peterborough.ac.uk/apprenticeships

APPRENTICESHIP LEVELS

Apprenticeships can go all the way up to the equivalent of degree level. Supportive employers will encourage their Apprentices to progress as high as possible to further career opportunities.

	Level	Equivalent Educational Level
Intermediate	2	5 GCSE passes at grades (9-4) A*-C
Advanced	3	2 A Level passes
Higher	4, 5, 6 and 7	Foundation degree and above

APPRENTICESHIP STATS AND FACTS



Source: Learners and Apprentices Survey 2018

SUPPORTED INTERNSHIPS

A Supported Internship is a personalised study programme for people aged 16 – 24 with an Education, Health and Care Plan (EHCP) who want to gain work experience before full-time employment or an Apprenticeship. Internships are unpaid and last for 39 weeks.

During a Supported Internship students are supported in the workplace by a job coach to build confidence and independence. Students typically spend 1 – 2 days a week at college and then the rest of the time in the workplace. It is a full-time commitment and any holidays will be booked directly with the employer.

Find out more

✉ emily.hale@peterborough.ac.uk
☎ 07710 762062

TRAINEESHIPS

If you like the sound of an Apprenticeship but would like to gain more experience first or improve your English and maths, then a Traineeship could be a great starting point for you.

Traineeships are designed to prepare young people for the workplace and are a great stepping stone between leaving school and applying for a full-time Apprenticeship.

Traineeships can last for up to 12 weeks. The programme combines college attendance to complete English and maths and employability qualifications with work experience. Young people between the age of 19 and 24 years old with qualifications lower than level 3 can apply.

Find out more

✉ apprenticeships@peterborough.ac.uk
☎ 01733 762121



APPLY NOW



www.peterborough.ac.uk/apprenticeships

COURSE DIRECTORY

Please see below a list of our current Apprenticeship offering at Peterborough College and with our group partners.

Course information correct at time of publishing, please check our website for latest updates.
*Duration listed is the average duration of an Apprenticeship and can vary depending on individual and employer.

SUBJECT	COURSE NAME	DURATION*	LOCATION
ACCOUNTING	Assistant Accountant Apprenticeship Level 3 Standard	18 months	• APT Training Centre • Rutland Campus
	Professional Accounting/Tax Technician Apprenticeship Level 4 Standard	24 months	• APT Training Centre • Rutland Campus
BUSINESS AND MANAGEMENT	Business Administrator Apprenticeship Level 3 Standard	18 months	• PRC Campus • Rutland Campus
	Customer Service Practitioner Apprenticeship Level 2 Standard	18 months	• PRC Campus
	Customer Service Specialist Apprenticeship Level 3 Standard	18 months	• PRC Campus
	Team Leader/Supervisor Apprenticeship Level 3 Standard	18 months	• PRC Campus • APT Training Centre
	Operations Departmental Manager Apprenticeship Level 3 Standard	30 months	• APT Training Centre
CONSTRUCTION	Bricklaying Apprenticeship Level 2 Standard	27 months	• PRC Campus
	Building Services Design Technician Apprenticeship Level 3 Standard	36 months	• PRC Campus
	Carpentry & Joinery Apprenticeship Level 2 Standard	27 months	• PRC Campus
	Advanced Carpentry & Joinery Apprenticeship Level 3 Standard	27 months	• PRC Campus
	Installation Electrician Apprenticeship Level 3 Standard	48 months	• PRC Campus
	Plumbing & Domestic Heating Technician Apprenticeship Level 3 Standard	48 months	• PRC Campus
EDUCATION AND CARE	Early Years Educator Apprenticeship Level 3 Standard	18 months	• PRC Campus • Rutland Campus
	Teaching Assistant Apprenticeship Level 3 Standard	18 months	• PRC Campus • Rutland Campus

SUBJECT	COURSE NAME	DURATION*	LOCATION
ENGINEERING AND MOTOR VEHICLE	Metal Fabricator Apprenticeship Level 2 Standard	42 months	• PRC Campus
	Engineering Technician Apprenticeship Level 3 Standard Pathways: - 9. Machinist Advanced Manufacturing Technician - 10. Mechatronics Maintenance Technician - 11. Product Design and Development Technician - 12. Toolmaker & Tool & Die Maintenance Technician - 13. Technical Support Technician	48 months	• PRC Campus
	Food & Drink Maintenance Engineer Apprenticeship Level 3 Standard	48 months	• PRC Campus
	Motor Vehicle Service Technician (Light Vehicle) Apprenticeship Level 3 Standard	36 months	• PRC Campus
	Motor Vehicle Service Technician (Heavy Vehicle) Apprenticeship Level 3 Standard	36 months	• PRC Campus
	HAIR	Hair Professional Apprenticeship Level 2 Standard	27 months
IT	Infrastructure Technician Apprenticeship Level 3 Standard	21 months	• PRC Campus
	IT Solutions Technician Apprenticeship Level 3 Standard	18 months	• PRC Campus
LAW	Paralegal Apprenticeship Level 3 Standard	24 months	• APT Training Centre
	Chartered Legal Executive Apprenticeship Level 6 Standard	5 years	• APT Training Centre



FINDING AN APPRENTICESHIP

There are two ways for you to find an Apprenticeship:

1. Find an employer of your own who is willing to take you on and support you as you complete your Apprenticeship
2. Apply directly online from the variety of available Apprenticeships found on www.peterborough.ac.uk/apprenticeships and www.gov.uk/apply-apprenticeship

HOW TO APPLY

I have my own employer

If you are currently employed or if you manage to find your own employer who is willing to take you on, then you can apply for an Apprenticeship course online by visiting our website:

www.peterborough.ac.uk/apprenticeships.

Online Vacancies

When applying online for a vacancy on our website or Find an Apprenticeship website, you will be able to create an online profile for yourself. This can include uploading your CV and a covering letter, along with any additional information about yourself which may be relevant and advantageous for the role you apply for. You can also select what industries you'd like to work in and once you have completed your online profile you will be able to apply for any positions available which are of interest.

WHAT'S NEXT

Once you have submitted your application, if you meet the criteria for the role, you will be invited in to the college for a BKSB English and maths assessment and a pre-interview.

Successful candidates will have their CVs forwarded to the employers, who will then decide who they wish to interview which will allow them to determine who will be successful for the position.

If you are unsuccessful for the role, do not let this put you off as there are always new vacancies added on a regular basis which you can apply for.



OUR PARTNERS

Here at Peterborough College we work with a range of training providers to expand our Apprenticeship offering in the local area.

Anglia Professional Training

Anglia Professional Training is based at Endeavour House in Peterborough, the Boathouse in Wisbech and Espace North in Littleport, Ely. These centres boast the latest industry facilities and software along with free on-site parking.

As a fully accredited AAT exam and study centre, APT is able to offer the full range of accountancy qualifications, from access all the way up to technical level. APT is also accredited with CIMA, ACCA and ICAEW so can offer you a full study path into these specialised areas. If you are looking to develop a career in legal services then APT is accredited with CILEx and can guide you along this qualification route. Find out more at apt4u.training



Rutland Adult Learning & Skills Service

Based at our Oakham Campus, Rutland Adult Learning & Skills Service is a joint partnership with Peterborough College and Rutland County Council. RALSS offers a variety of Apprenticeship programmes as well as work-based qualifications, classroom-based qualifications in English, Maths, Accounting and ICT, leisure courses in Arts and Languages, and employability and life skills at beginner levels.

Find out more at www.ralss.org.uk

APPLY NOW



www.peterborough.ac.uk/apprenticeships



THE
APPRENTICESHIP
ACADEMY

01733 762121

apprenticeships@peterborough.ac.uk

www.peterborough.ac.uk/apprenticeships

Tweet: @AppsPboroColl